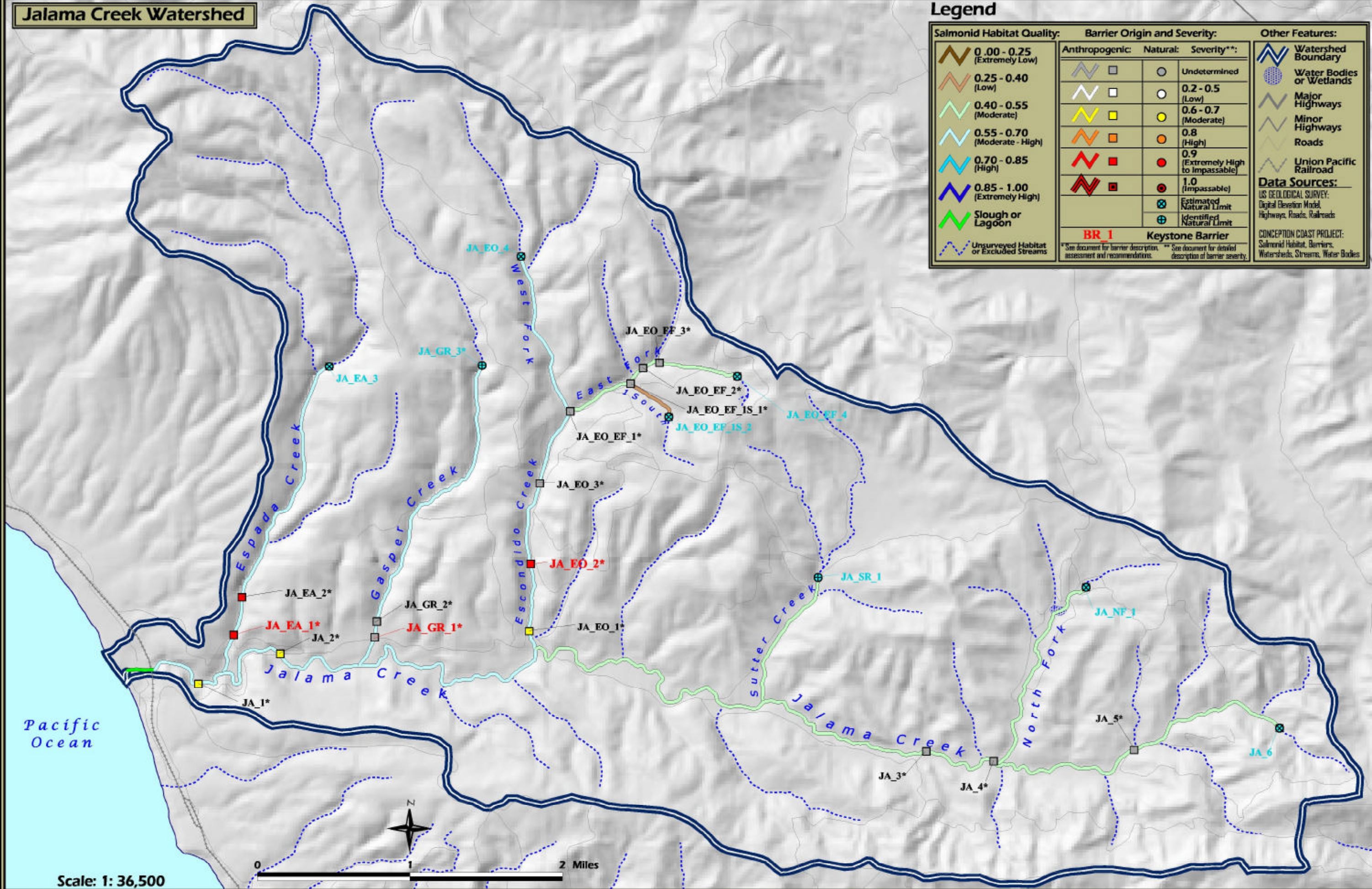


# Jalama Creek Watershed

## Legend

Salmonid Habitat Quality:	Barrier Origin and Severity:			Other Features:
0.00 - 0.25 (Extremely Low)	Anthropogenic	Natural	Undetermined	Watershed Boundary
0.25 - 0.40 (Low)	Anthropogenic	Natural	0.2 - 0.5 (Low)	Water Bodies or Wetlands
0.40 - 0.55 (Moderate)	Anthropogenic	Natural	0.6 - 0.7 (Moderate)	Major Highways
0.55 - 0.70 (Moderate - High)	Anthropogenic	Natural	0.8 (High)	Minor Highways
0.70 - 0.85 (High)	Anthropogenic	Natural	0.9 (Extremely High to impassable)	Roads
0.85 - 1.00 (Extremely High)	Anthropogenic	Natural	1.0 (Impassable)	Union Pacific Railroad
Slough or Lagoon	<b>BR_1</b> Keystone Barrier			<b>Data Sources:</b>
Unsurveyed Habitat or Excluded Streams	* See document for barrier description. ** See document for detailed assessment and recommendations.			US GEOLOGICAL SURVEY: Digital Elevation Model, Highways, Roads, Railroads
		Estimated Natural Limit	Identified Natural Limit	CONCEPTION COAST PROJECT: Salmonid Habitat, Barriers, Watersheds, Streams, Water Bodies



Pacific Ocean

Scale: 1: 36,500