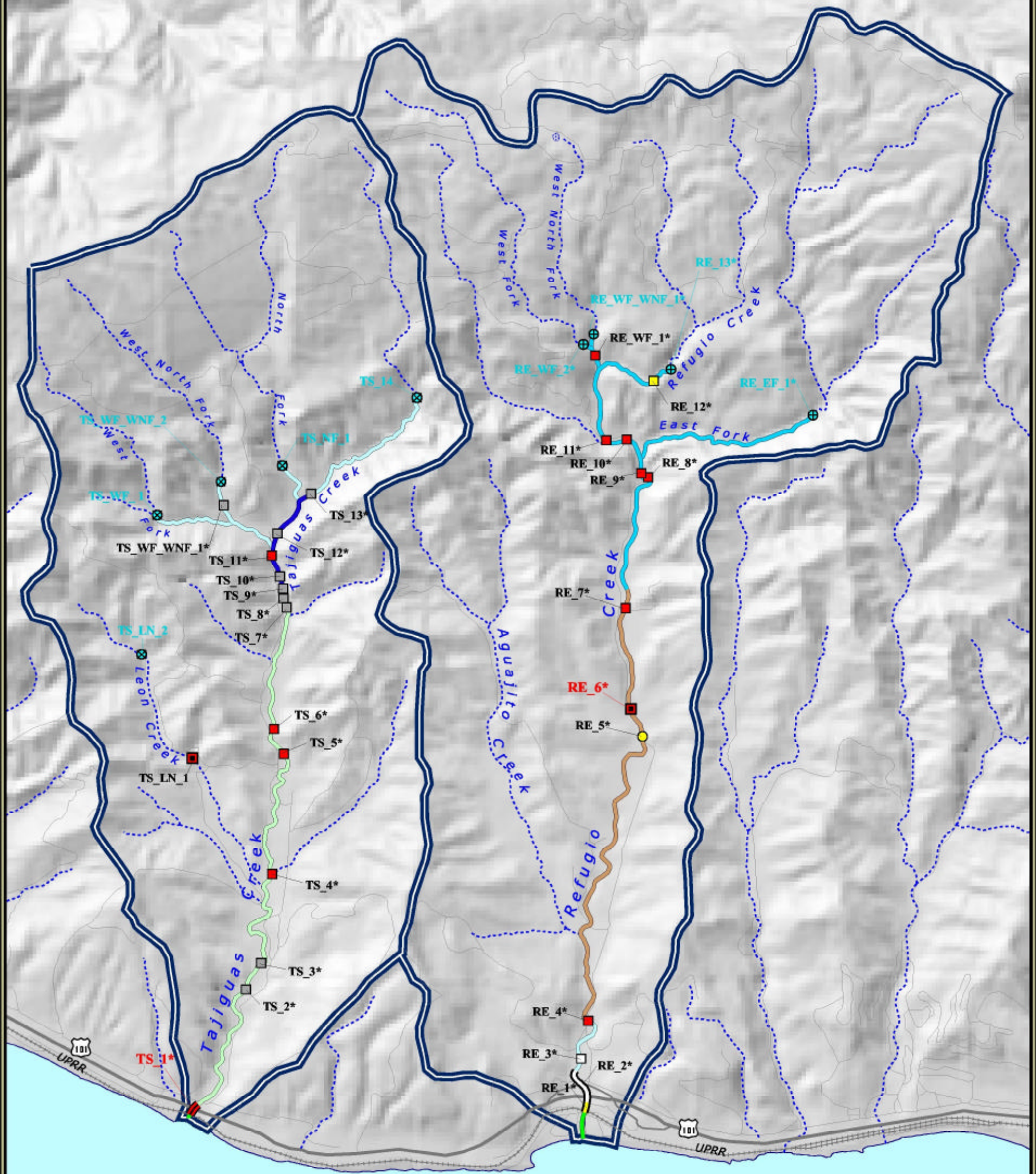


Tajiguas Creek Watershed

Refugio Creek Watershed



Legend

| Salmonid Habitat Quality: | Barrier Origin and Severity: | | Other Features: |
|--|------------------------------|------------------------------------|---|
| | Anthropogenic: | Natural: | |
| | | | Severity**: |
| 0.00 - 0.25 (Extremely Low) | Undetermined | Undetermined | Watershed Boundary |
| 0.25 - 0.40 (Low) | 0.2 - 0.5 (Low) | 0.6 - 0.7 (Moderate) | Water Bodies or Wetlands |
| 0.40 - 0.55 (Moderate) | 0.8 (High) | 0.9 (Extremely High to Impassable) | Major Highways |
| 0.55 - 0.70 (Moderate - High) | 1.0 (Impassable) | Estimated Natural Limit | Minor Highways |
| 0.70 - 0.85 (High) | BR_1 Keystone Barrier | Identified Natural Limit | Roads |
| 0.85 - 1.00 (Extremely High) | | | Union Pacific Railroad |
| Slough or Lagoon | | | Data Sources: |
| Unsurveyed Habitat or Excluded Streams | | | US GEOLOGICAL SURVEY: Digital Elevation Model, Highways, Roads, Railroads |
| | | | CONCEPTION COAST PROJECT: Salmonid Habitat, Barriers, Watersheds, Streams, Water Bodies |

Santa Barbara Channel
Pacific Ocean



Scale: 1: 31,000