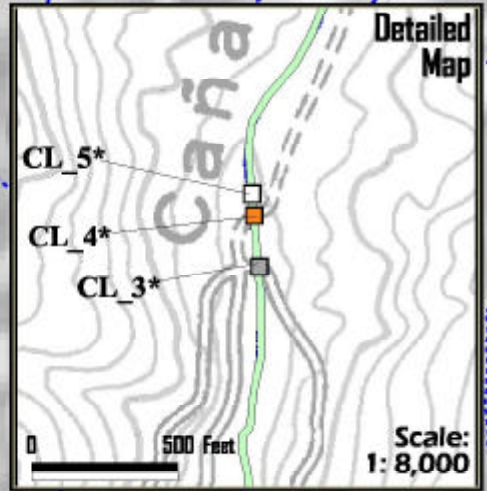
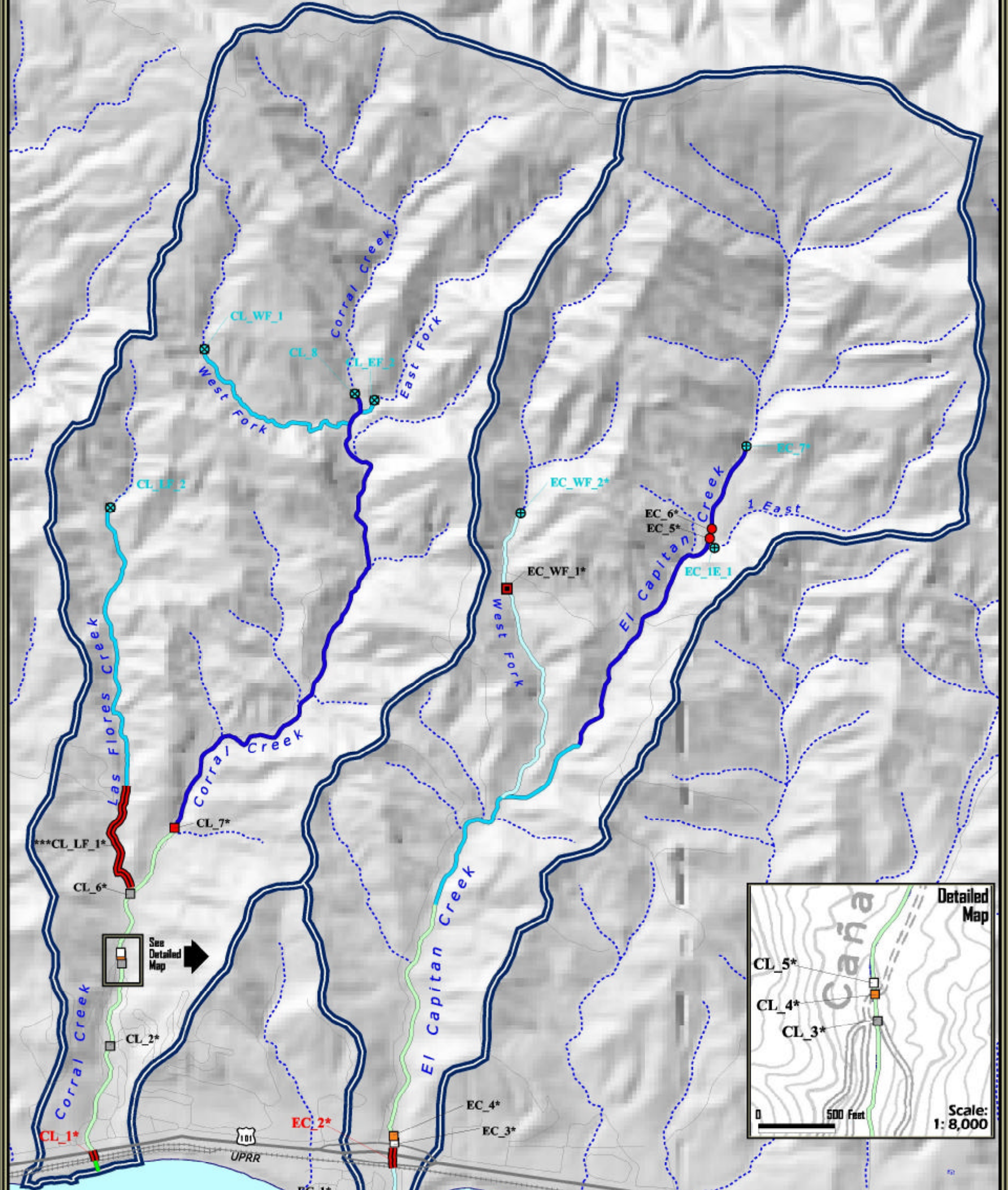


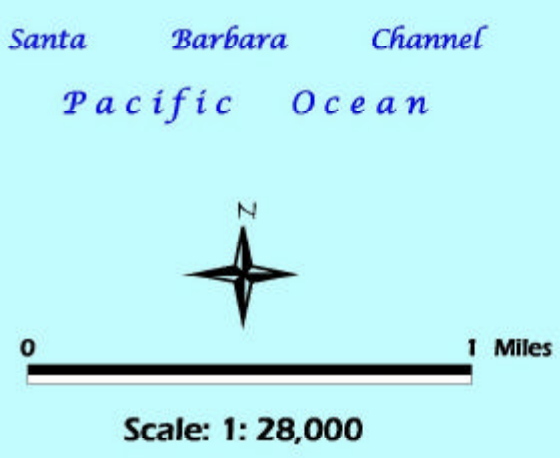
Corral Creek Watershed

El Capitan Creek Watershed



Legend

Salmonid Habitat Quality:	Barrier Origin and Severity:			Other Features:
	Anthropogenic:	Natural:	Severity**:	
0.00 - 0.25 (Extremely Low)			Undetermined	Watershed Boundary
0.25 - 0.40 (Low)			0.2 - 0.5 (Low)	Water Bodies or Wetlands
0.40 - 0.55 (Moderate)			0.6 - 0.7 (Moderate)	Major Highways
0.55 - 0.70 (Moderate-High)			0.8 (High)	Minor Highways
0.70 - 0.85 (High)			0.9 (Extremely High to Impassable)	Roads
0.85 - 1.00 (Extremely High)			1.0 (Impassable)	Union Pacific Railroad
Slough or Lagoon			Estimated Natural Limit	Data Sources:
Unsurveyed Habitat or Excluded Streams			Identified Natural Limit	US GEOLOGICAL SURVEY: Digital Elevation Model, Highways, Roads, Railroads
	BR_1		Keystone Barrier	CONCEPTION COAST PROJECT: Salmonid Habitat, Barriers, Watersheds, Streams, Water Bodies



*** This stream reach is buried. The exact configuration is not accurately represented on this map.