

Rincon Creek Watershed

Legend

Salmonid Habitat Quality:



Barrier Origin and Severity:

Anthropogenic:	Natural:	Severity**:
		Undetermined
		0.2 - 0.5 (Low)
		0.6 - 0.7 (Moderate)
		0.8 (High)
		0.9 (Extremely High to Impassable)
		1.0 (Impassable)
		Estimated Natural Limit
		Identified Natural Limit

BR_1 Keystone Barrier

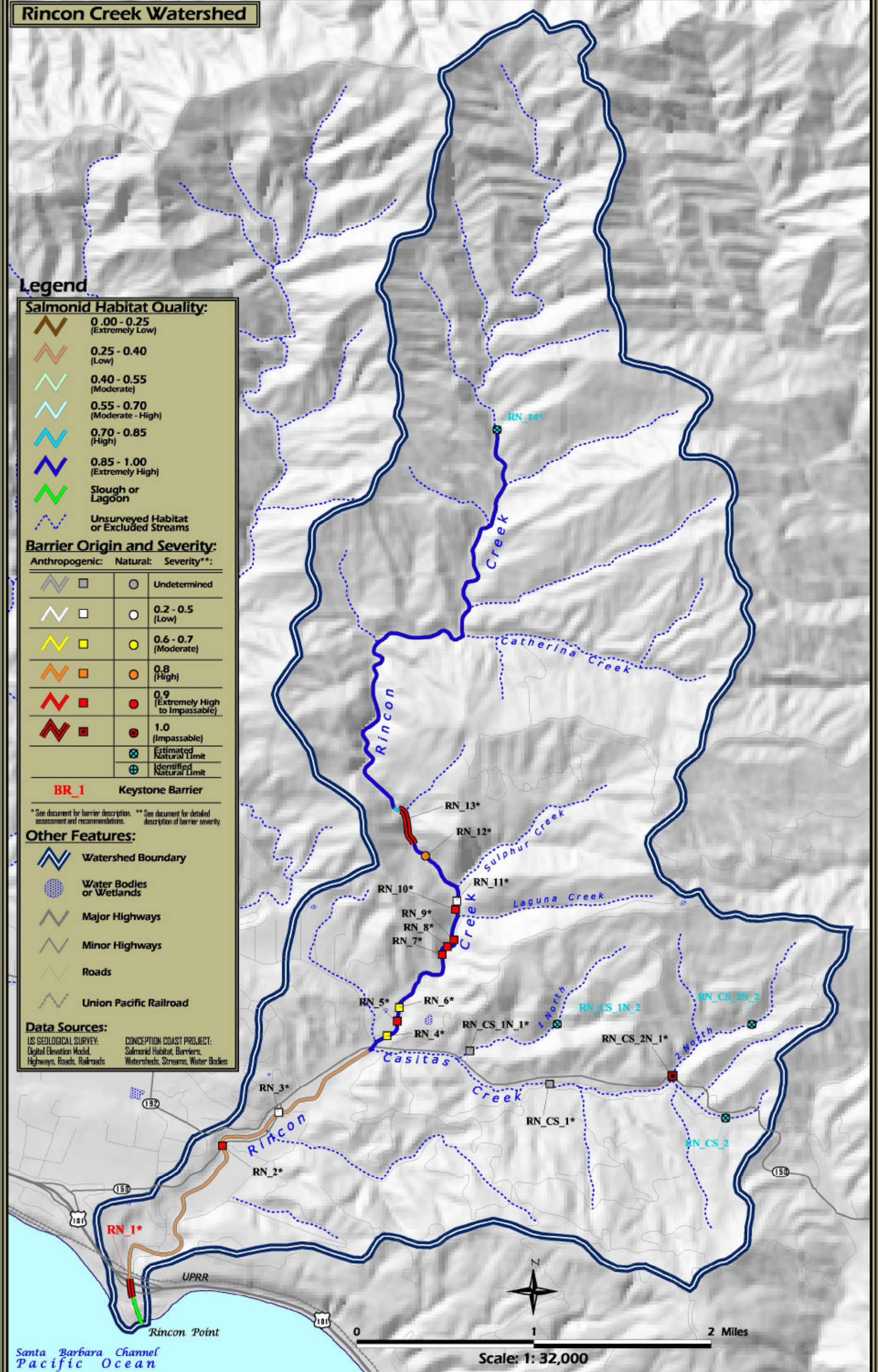
* See document for barrier description. ** See document for detailed assessment and recommendations.

Other Features:



Data Sources:

US GEOLOGICAL SURVEY: Digital Elevation Model, Highways, Roads, Railroads
 CONCEPTION COAST PROJECT: Salmonid Habitat, Barriers, Watersheds, Streams, Water Bodies



Santa Barbara Channel
Pacific Ocean